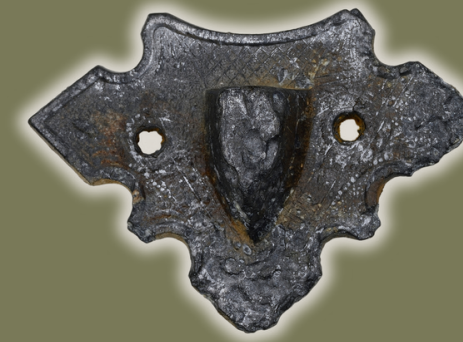




Global Positioning System

SAVE THE PAST FOR THE FUTURE

ARCHAEOLOGY MONTH 2025



Coffin Hardware

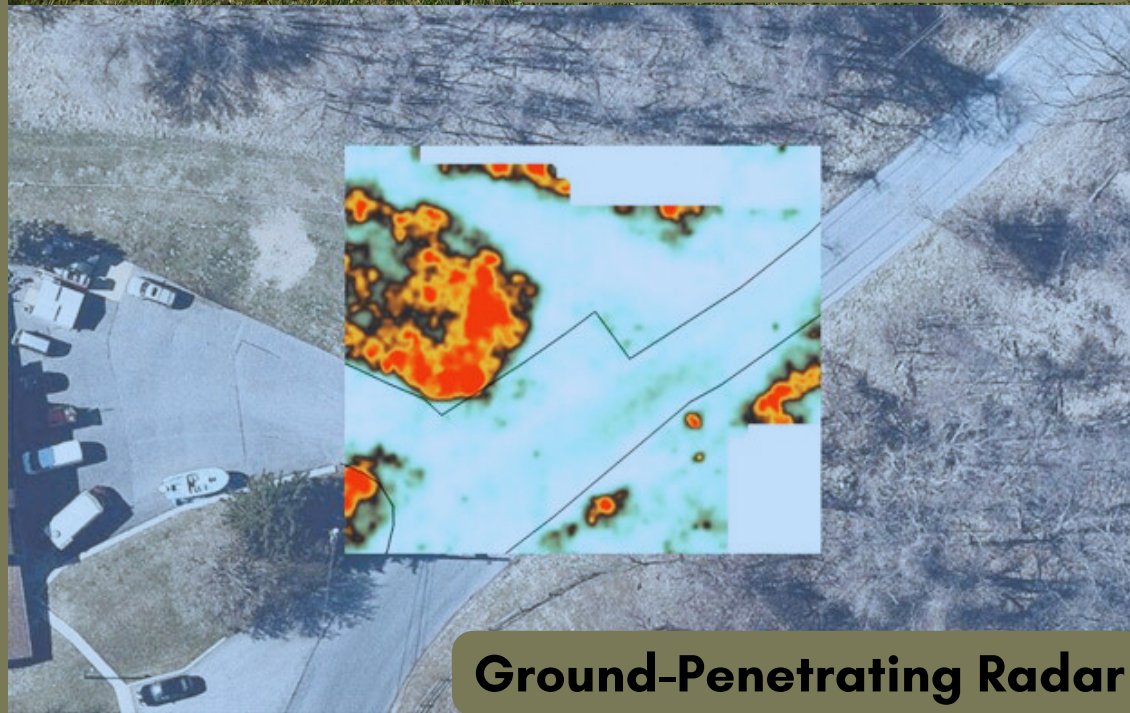
Credit: Pennsylvania Historical Museum Commission, Midland Cemetery Collection



Aerial Drone



Community Involvement



Ground-Penetrating Radar



Community Involvement



Global Positioning System Survey

Community archaeology is when the *community* leads the *archaeology*. Archaeology does many things and helping communities to recover knowledge of the forgotten is one of them. Communities, like those involved in Pennsylvania Hallowed Grounds, Friends of Midland and Lebanon Cemeteries are often faced with disrepair and undocumented historic cemeteries. By partnering with archaeologists, communities can identify using scientific tools that can help them record and preserve their history. Midland and Lebanon Cemeteries and the Pennsylvania Archaeological Council teamed up to map boundaries and known burials, identify potential unmarked burials, and raise awareness of past and present communities.

Sponsors:



Partners: Society for Pennsylvania Archaeology , Professional Archaeological Council , Pennsylvania Hallowed Grounds, Pennsylvania Historical and Museum Commission, Friends of Midland Cemetery , Friends of Lebanon Cemetery, and Indiana University of Pennsylvania.



Midland Cemetery



Lebanon Cemetery